



andropogon

landscape architecture
ecological planning & design

BROCHURE | GENERAL

an-dro-po-gon \ n:

a common field grass, is one of nature's remarkable adaptations to stress and change in the landscape. Wherever the landscape has been disturbed, andropogon is one of the first field grasses to colonize the ground, providing a self-sustaining cover for the gradual return of our native forests.

The economy and elegance with which these grassy meadows heal the wounded landscape aptly describes Andropogon's goal in ecological planning and design,

“to weave together the landscape of man and nature for the benefit of both.”

TABLE OF CONTENTS

FIRM INFORMATION	1
BREAKING NEW GROUND	15
CREATING A SENSE OF PLACE	29
RECLAIMING / REINVENTING THE LANDSCAPE.....	43





FIRM INFORMATION

FIRM PROFILE

Founded more than thirty years ago, Andropogon is committed to the principle of “designing with nature,” creating beautiful and evocative landscapes inspired by the careful observation of natural processes and informed by the best environmental science. The elegance and economy of natural form and process continues to be the benchmark by which we measure the success of our work—from the smallest construction detail to the multi-layered patterns of regional sites.

With a multi-cultural staff of over thirty, we are committed to the successful maturing of each project, from initial concept designs to construction review and long-term landscape management. Our body of work includes early examples of innovative green strategies that have withstood the test of time as well as a broad range of landscape, site planning, environmental projects, ecological restoration and innovative stormwater management techniques, both nationally and internationally.

Our clients often tell us that we combine integrated design with a depth of ecological understanding in synergistic ways. With every project we embody our mission...”to weave together the landscapes of man and nature for the benefit of both.”

10 Shurs Lane
Philadelphia, PA 19127
t: 215.487.0700
f: 215.483.7520
www.andropogon.com

RIGHT: *The University of Pennsylvania, Quadrangle College Houses, Philadelphia, Pennsylvania*



SERVICES

Landscape Architecture and Urban Design

- site analysis
- site & landscape design
- landscape management
- permit and regulatory preparation
- construction documentation & observation
- historic preservation and adaptive reuse

LEED™ & SITES Strategies

- site selection
- environmental assessment
- site planning & design
- stormwater management
- brownfield redevelopment

Master Planning

- program analysis and development
- mixed-use & residential development
- institutional visioning and development
- stormwater management
- ecological restoration
- brownfield redevelopment
- funding strategies

Regional Planning

- environmental & land use planning
- environmental assessment
- feasibility studies
- natural resource management
- open space and trail systems
- community planning and facilitation

RIGHT: *The Ross School, East Hampton, Long Island, New York*





SELECTED PARTNERS: ARCHITECTS

Architecture +
Architerra
Atkin Olshin Schade Architects
Ayers Saint Gross
Ballinger
Becker Winston Architects
Bohlin Cywinski Jackson
Bowie Gridley Architects
Burt Hill
CBT/Childs Bertman Tsekares
Cesar Pelli & Associates
Cook + Fox
Cooper, Robertson & Partners
Croxtton Collaborative Architects
DPK&A Architects
Dober, Lidsky, Craig & Associates
Dover, Kohl & Partners
Einhorn Yaffee Prescott
Ellerbe Becket
EwingCole
Gannett Fleming Inc.
Gensler
Goody Clancy
Gund Partnership
Hanbury, Evans, Wright, Vlattas & Company
HNTB
H2L2
IKM, Inc.
Kieran Timberlake Associates, LLP
KlingStubbins
Koetter, Kim & Associates
KSS Architects
Kruek + Sexton
Lake/Flato Architects, Inc.
LS3P Associates, Ltd.
Maya Lin Studio
Michael Graves & Associates
Moore Ruble Yudell
Overland Partners
Patkau Architects
Perkins & Will
Rafael Viñoly Architects
RMJM Hillier
Robert A.M. Stern Architects
SaylorGregg Architects
Schmidt Copeland Parker Stevens
Skidmore Owings & Merrill
SmithGroup
Solomon Cordwell Buenz
The Lawrence Group
Tsoi Kobus & Associates, Inc.
Venturi, Scott Brown & Associates
Vitetta Group
Voith & Mactavish Architects
William McDonough + Partners
Zeidler Partnership
Zimmer Gunsul Frasca Architects

LEFT: *Lubert Plaza at Thomas Jefferson University, Philadelphia, Pennsylvania*

SELECTED CLIENTS

Adkins Arboretum MD
Avalon Park and Preserve NY
Atlanta Botanical Garden GA
Bartlett Arboretum CT
Brooklyn Botanic Gardens NY
Bronx Art Center NY
Bryn Mawr College PA
Center City District, Philadelphia PA
Central Park Conservancy NYC
Chatham University PA
Chestnut Hill College PA
City of Allentown PA
City of Cleveland OH
City of Lewes DE
City of Philadelphia, PA
Clemson University SC
Cornell University NY
Crosby Arboretum MI
Cuyahoga Planning Commission OH
The Dallas Arboretum TX
Dickinson College PA
Dover, Kohl & Partners FL
Duke Farms Foundation NJ
E.I. du Pont de Nemours & Co. DE
Fairmount Park Commission PA
Franklin Institute in Philadelphia
Ft. Worth Botanical Gardens TX
General Services Administration, DC
Grey Towers National Historic Landmark PA
Grasso Holdings PA
Haverford College PA
Hoffmann LaRoche Inc NJ
Holden Arboretum OH
Howard Hughes Medical Research Foundation VA
Lehigh Valley Hospital PA
Longwood Gardens DE
The Louisville Olmsted Parks Conservancy KY
Manitoga, Man and Nature Center NY
Manayunk Development Corporation PA
Merck Sharp & Dohme PA
Middlebury College VT
Millbrook School CT

Moravian Academy PA
Morris Arboretum of the University of Pennsylvania PA
Morris County Park Commission NJ
National Park Service, DC
National Defense University DC
National Storytelling Center TN
Nikko Kirifuri Resort, Japan
Oberlin College OH
The Perot Group TX
Phipps Conservatory and Botanical Gardens, PA
Pittsburgh Urban Redevelopment Authority PA
Princeton University NJ
Prospect Park NY
Riverlife Task Force PA
Rochester Psychiatric Center NY
Ross School NY
Salvation Army PA
Schuylkill Center for Environmental Education PA
Scott Horticultural Foundation of Swarthmore College, PA
Sidwell Friends School DC
Skidmore College NY
Smithville Park NJ
SmithKline Beecham PA
Stapleton Redevelopment Foundation CO
The Pennsylvania State University PA
Thomas Jefferson University PA
Tishman Speyer Properties
Trinity College CT
Tyler Arboretum PA
University of Michigan MI
University of North Carolina NC
University of Pennsylvania PA
University of the Sciences in Philadelphia
University of Toronto, Ontario
University of Vermont VT
University of Virginia VA
U.S. Army Corps of Engineers DC
U.S. Fish and Wildlife Service DC
U.S. Coast Guard DC
Villanova University PA
Washington National Cathedral DC
Western Pennsylvania Conservancy PA
The World Bank, Vanuatu and Sri Lanka
Yale University CT

AWARDS

2009 Citation for Sustainable Design from AIA Boston for the New Science Center at Brooks School with Architerra, Inc

2009 Preservation Achievement Grand Jury Award from the Preservation Alliance of Greater Philadelphia for the Historic Smithville Streetscape Renovation, with Vitetta

2008 AIA COTE Top Ten Green Project for the Center for Art & Science at Cambridge School of Weston, with Architerra, Inc.

2008 AIA COTE Top Ten Green Project for the Sculpture Building at Yale University, with Kieran Timberlake Associates

Stormwater BMP Award for Valley Green Environmental Restoration Program, Philadelphia PA

2007 Stormwater BMP Award for Valley Green Environmental Restoration Program, Philadelphia PA

2007 AIA COTE Top Ten Green Project for Sidwell Friends Middle School, Washington, D.C. , with Kieran Timberlake Associates

2006 AIA COTE Top Ten Green Project for the Philadelphia Forensic Science Center, with Croxton Collaborative

2006 Stormwater BMP Award for Thomas Jefferson University Plaza in Philadelphia

2005 Regional Merit Award from the Canadian Society of Landscape Architects for King's College Circle Precinct at the University of Toronto.

2005 Toronto Architecture & Urban Design Award, Honourable Mention for King's College Circle Precinct at the University of Toronto

2004 The Landmark Award from the American Society of Landscape Architects for the Strategic Master Plan for Renewal of the Morris Arboretum of the University of Pennsylvania

2004 Cooper-Hewitt National Design Award, Finalist in the Environmental Design category

2004 Grand Jury Project Award from the Preservation Alliance for Penn's Quadrangle College Houses

2003 AIA COTE Top Ten Green Project for the Cusano Environmental Education Center at the John Heinz National Wildlife Refuge, with Susan Maxman Partners

RIGHT: *Nikko Kirifuri Resort, Nikko City, Tochigi Prefecture, Japan*





2003 Landscape Design Award from The American Horticultural Society

2003 AIA Connecticut Design Award for the Sterling Divinity Quadrangle, Yale University

2002 AIA COTE Top Ten Green Project for the Adam Joseph Lewis Center for Environmental Studies at Oberlin College

2002 Merit Award in Planning/Analysis from the American Society of Landscape Architects PA/DE Chapter for Fallingwater

2001 Design Merit Award from the American Society of Landscape Architects for the Landscape Master Plan for Nikko Kirifuri Resort, Japan

2000 Merit Award in Communications from the American Society of Landscape Architects for *The Once and Future Forest*

2000 Centennial Medallions “recognizing significant works of landscape architecture,” from the American Society of Landscape Architects to the Morris Arboretum and the Crosby Arboretum

1998 Merit Award from the American Society of Landscape Architects for the Colonial Parkway Cultural Landscape Report

1998 Eleanor Houston Smith Award for Conservation and Preservation from the Schuylkill Center for Environmental Education

1997 Outstanding Achievement Award from the International Downtown Association for the Walk!Philadelphia Streetscape

1996 Outstanding Comprehensive Planning Award from the American Planning Association for the Stapleton Redevelopment Plan, Denver CO

1995 Award for Design Excellence from the Philadelphia Chapter of the American Institute of Architects for the 26th Street Gateway Project, Center City, Philadelphia

1992 Environmental Enhancement Award from the NJ Chapter of the American Society of Landscape Architects

1992 Merit Award from the New Jersey Chapter of the American Society of Landscape Architects for Hartley Farms, NJ

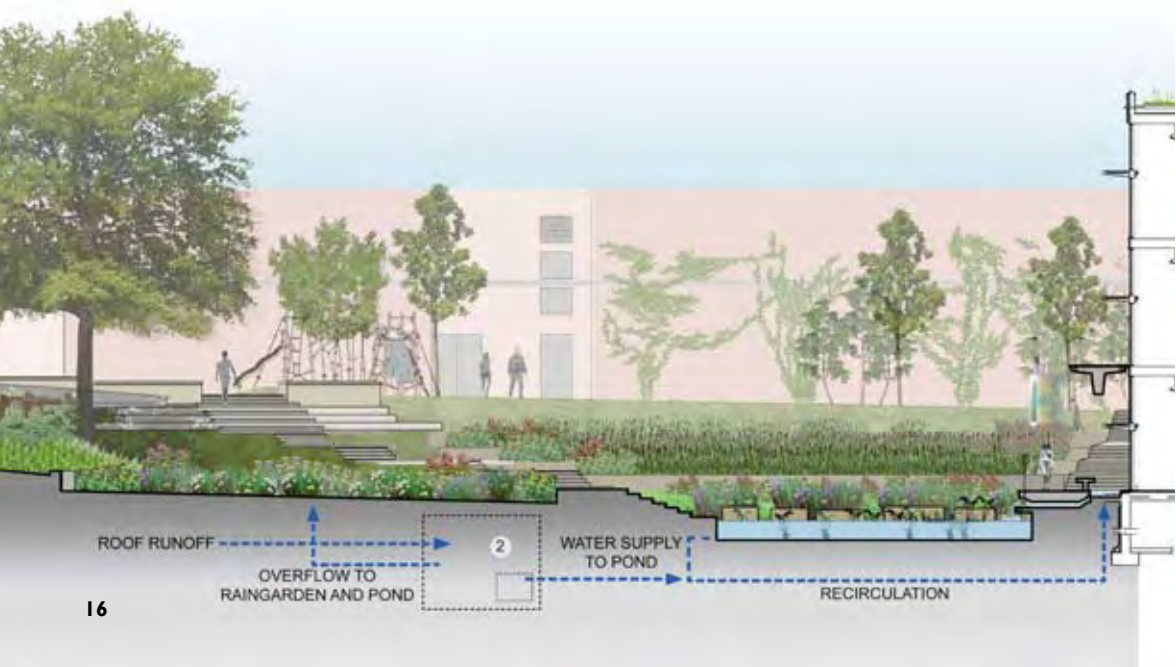
1991 Distinguished Landscape Practitioners Award from the US Chapter of the International Association for Landscape Ecology

LEFT: Oberlin College's Adam Joseph Lewis Center for Environmental Studies, Oberlin, Ohio





BREAKING NEW GROUND



SIDWELL FRIENDS SCHOOL

Campus Planning | Site Design & Implementation
Washington, D.C. & Bethesda, Maryland

Andropogon's Master Plan & Site Design at Sidwell Friends School included a central courtyard with a constructed wetland designed to utilize storm and wastewater for both ecological and educational purposes. Andropogon's plan integrated water management solutions into the landscape, inextricably linking the building to its site. The wetland becomes a "working landscape"; using biological processes to clean water while providing students with a vivid example of how such systems work in nature.

2007 AIA COTE Top Ten Green Project
2007 Certified LEED™ Platinum

TOP LEFT: *perspective of wetlands in front of Middle School*
BOTTOM LEFT: *water system diagram*

2008 CHINA OLYMPICS

Competition Finalist | Master Plan & Site Design
Beijing, China

The master plan for the Forest Park and the Central Zone of the 2008 Summer Olympic included more than eleven square kilometers of programmed open space, natural areas and a 250-acre “Dragon Lake”. As one of the finalists of the international design competition to realize the previously approved plan, Andropogon and their Chinese partners employed strategies for urban renewal, transportation, restoration, flood control, recreation, and habitat re-creation; bringing nature back into the city at an unprecedented scale. Because Beijing receives less than 32 inches of rainfall annually, the creation of a healthy and functioning lake required developing strategies for using recycled water. Methods proposed included extensive garden wetlands designed to further cleanse discharge from the sewage plants, capture of runoff, circulation of lake water to maintain lake health, and treatment of black water by “living machine” technology to provide additional sources of water.

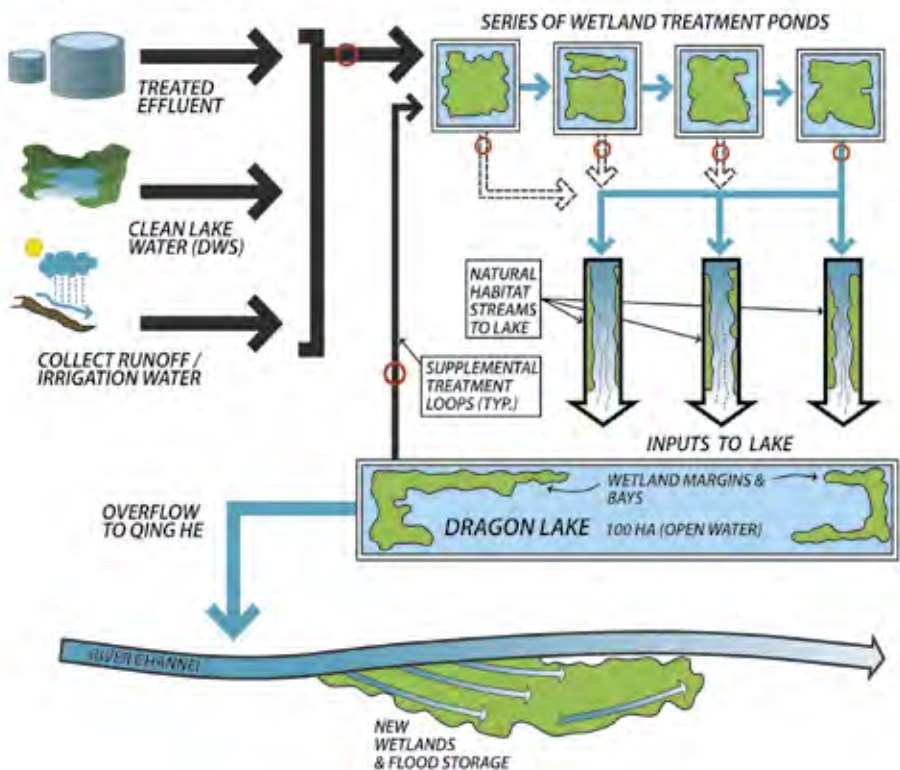
TOP RIGHT: *Forest Park perspective*
BOTTOM RIGHT: *water flow diagram*



WATER SOURCE



SYSTEM FLOWS



JOHOR BAHRU, MALAYSIA

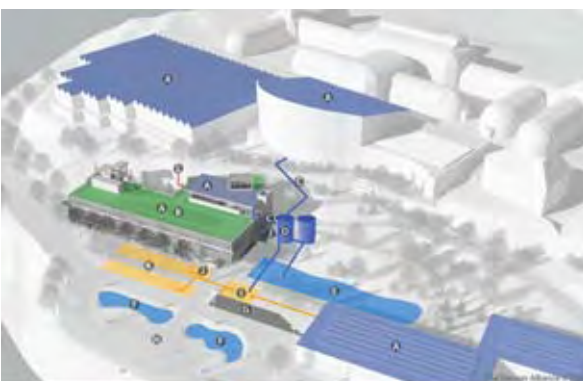
Master Planning | International Financial Districts – Iskandar Development Region
Johor Bahru, Malaysia

The International Financial District (IFD) is one of nine Node parcels located within the 27,048 acre Iskandar Development Region (IDR) overlooking the Straits of Johor between Malaysia and Singapore.

The District, a high-density mixed use area, will include office, hotels, retail, residential, recreational and public amenities supported by convenient public transit, roads, parking, and infrastructure. The landscape plan integrates the site's environmental strategies into an open space network that creates a sense of place through public amenities and takes advantage of the shared resources within the landscape.

TOP RIGHT: *illustrative master plan showing hilltop parks*
BOTTOM RIGHT: *development perspective*





NET-ZERO WATER DIAGRAM

- A. Storm Water Capture
- B. Green Roof System
- C. Direct Storm Water Capture
- D. Water Storage Cistern
- E. Lagoon Storm Water Storage
- F. Rain Gardens Lagoon Overflow
- G. Subsoil/Deep Storm Water Storage
- H. Perennial Riparian
- I. Disconnected Driveways
- J. City-owned Ponds
- K. Subsoil/Deep Storm Water Storage
- L. Urban Parking - Greenwater

- old field slopes
- formal allees
- rain gardens
- water's edge
- aspen groves
- lowland hardwoods
- evergreen gardens
- oak woodland



PHIPPS CONSERVATORY

Master Planning & Site Design | Center for Sustainable Landscapes
Pittsburgh, Pennsylvania

As the nation's first teaching conservatory, Phipps Conservatory and Botanical Garden continues its mission into the 21st century with the construction of the Center for Sustainable Landscapes. Andropogon worked closely with an integrated design team of architects, engineers, and stakeholders to ensure that the new facility would meet the rigorous criteria of the Living Building Challenge. The solution generates 100 percent of the building's energy on-site and harvests enough precipitation and gray water to supply the building's water needs. Andropogon's design is modeled to manage and treat 100% of the project's stormwater and wastewater as mandated by the Living Building Challenge. Once finished, the new facility will be a true living building and a demonstration facility like none other in the world.

TOP LEFT: *site plan*

MIDDLE LEFT: *stormwater diagram / planting plan*

BOTTOM LEFT: *perspective view*

CAPITAL CITY DISTRICT - ABU DHABI

Master Planning | Capital City District – City Centre Master Plan
Abu Dhabi, United Arab Emirates

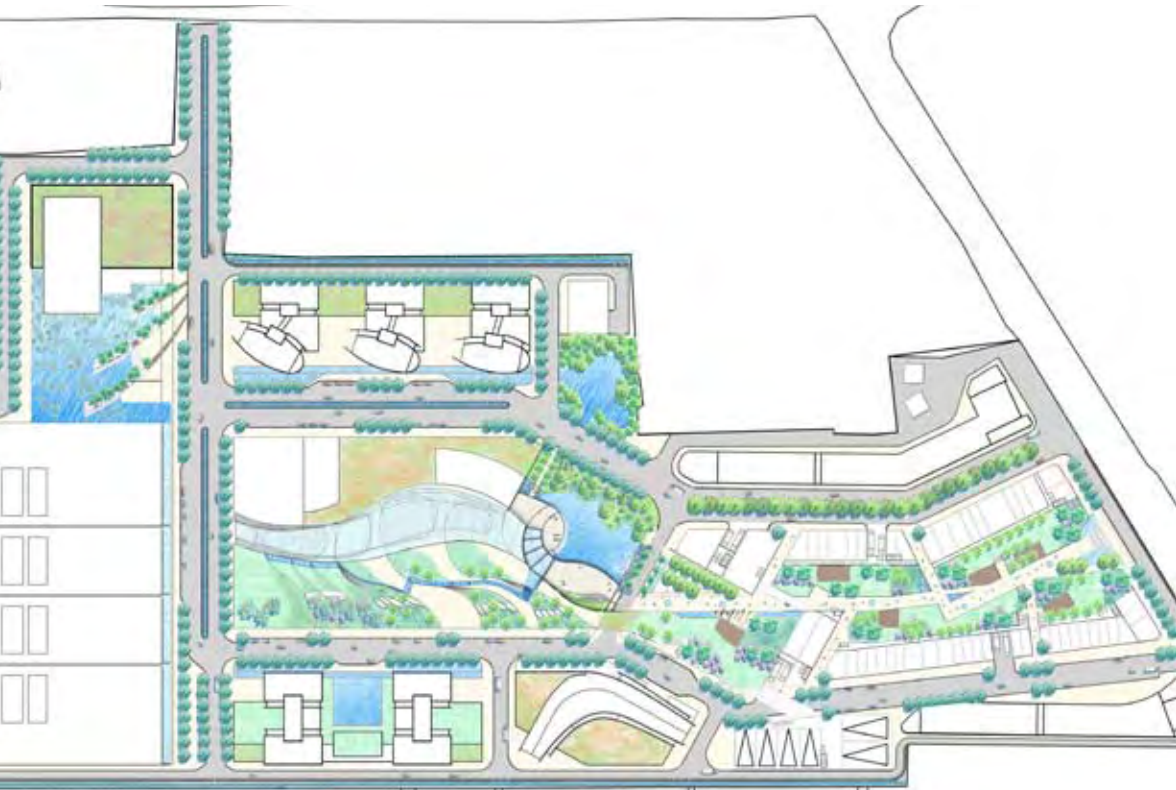
The Master Plan for this 110-Hectare Eco Park includes a residential component, a 5-star Eco-Hotel, a Mangrove Island and Organic Farm. The Mangrove Island, a 60 Hectare development, includes a wildlife visitors' center, 21 eco-cabins, and a restaurant. Sustainable design elements include on-site energy and portable water production, all from renewable resources. In addition, extensive programs will be developed to protect the existing Mangroves as well as establish new Mangrove habitats. The 13-acre Organic Farm will supply the residential community and on-site restaurants with locally grown fresh produce. The plan provides the Eco Park with an opportunity to showcase progressive principles in the development of an ecologically significant site. More so, the Master Plan purposefully strengthens the existing natural, cultural and social values, serving as a model for the community and region at large.

TOP RIGHT: *bird's eye view perspective*
BOTTOM RIGHT: *open space perspective*



rendering courtesy of Solomon Cordwell Buenz





MIXED-USE DEVELOPMENT

Master Planning & Site Design | Confidential Client
Phnom Penh, Cambodia

Andropogon Associates is collaborating in the Master Planning and development of a 37.4-Acre Mixed Use development in Cambodia. The world-class project will feature combined commercial and residential components, streetscapes, green roofs, green walls, public plazas, retail and entertainment centers, a Convention Center and a 5-star luxury Hotel and Residence tower.

The design provides the development with a working landscape, which provides a green infrastructure that utilizes alternative strategies such as decentralized systems for one hundred percent on-site management of its stormwater and wastewater. In addition, the design preserves and celebrates natural resources existing on site while educating visitors and residents about methods of sustainability that alleviate torrential flooding and contamination of precious water sources that occur during the Monsoon season. The project will demonstrate how sustainable design can lead to a low impact development that revitalizes the community as well as the natural resources of the land.

TOP LEFT: *landscape master plan*
BOTTOM LEFT: *convention center pool rendering*





CREATING A SENSE OF PLACE

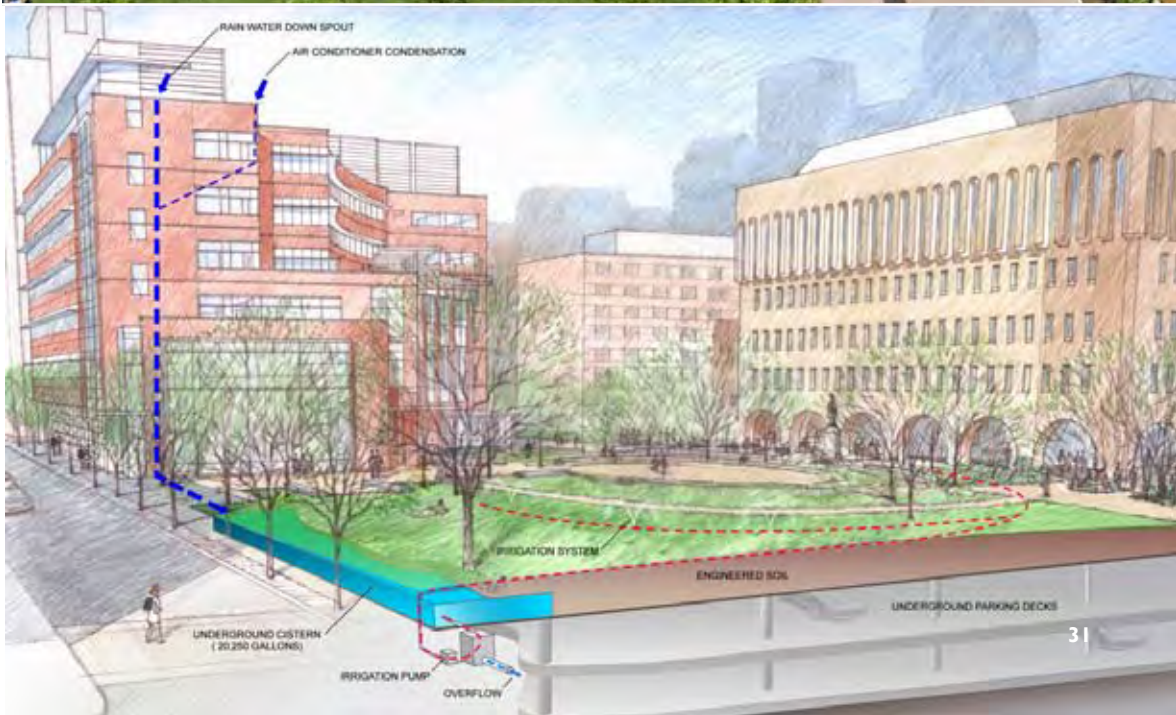
THOMAS JEFFERSON UNIVERSITY

Site Design | New Campus Plaza
Philadelphia, Pennsylvania

Andropogon transformed a bleak urban plaza in Center City Philadelphia to create a central green for the Thomas Jefferson University campus. By integrating the air conditioning condensation and stormwater runoff of the adjacent academic building with landscape, the plan successfully created efficient, inter-connected systems embedded in the urban fabric.

2006 Stormwater BMP Award from the City Of Philadelphia Water Department

TOP RIGHT: *aerial of plaza*
BOTTOM RIGHT: *stormwater diagram*



ROSS SCHOOL

Master Plan & Site Design | Ross School
East Hampton, Long Island

The Ross School is an alternative private school located on 140-acres in the oak-pine forest of eastern Long Island. Serving as the “constant” for the client on this multi-million dollar, fast-tracked project, Andropogon designed the landscapes for the entire campus -- building landscapes, outdoor classrooms, plazas and courtyards, pedestrian paths, amphitheaters, entrance roads, and parking lots. The campus landscapes integrate the built world into the unique landscape of the Pine Barrens. This strategy extends the inside classroom experience outside, creating outdoor rooms of native woodlands and dramatic, glacial boulders from a local terminal moraine. The spare, elegant evergreen landscape, native to Long Island, offered a plant palette to reinterpret classic motifs from East Asian gardens. The resulting landscape design reflects the holistic and sustainable philosophy of the school’s educational goals of balancing nature and culture, East and West

TOP RIGHT: *outdoor class at amphitheater*
BOTTOM RIGHT: *stone walkway to rock garden*



LISI LAKES

Master Planning & Site Design | Waterfront Mixed-Use Development
Tbilisi, Republic of Georgia

This project, located on 355-hectares just north Georgia’s capital city Tbilisi, was designed as Georgia’s first wholly sustainable mixed use development. The planning effort was challenged by the site’s steep topography and the existing depleted water table. Working with the project team, Andropogon created an environmental framework to guide the master planning and development process that was based on an understanding of the site’s cultural and natural resources, including hydrology, geology, and regional context. This approach helped accommodate a dense program of new neighborhoods, public plazas, recreational facilities, restaurants, shopping, schools, and civic amenities while restoring the natural function and character to the site.

TOP RIGHT: *perspective of residential terrace*

BOTTOM RIGHT: *rendering of proposed neighborhood from open space corridor*



CHENNAI RESIDENTIAL COMPLEX

Master Planning & Site Design | Confidential Client
Chennai, India

The Chennai, India project is a new residential community consisting of 113 acres and approximately 15,000 residents located in the Chembarakkam area of Chennai, on the Chennai-Bangalore route. Development of the project will follow in two phases. The first phase will be developed on a parcel of approximately 40 acres. The product mix for this phase consists mainly of Independent villas and townhouses. The second phase will be developed on a parcel of approximately 70 acres and will contain a more dense development of apartments and mid rise apartments. The master plan design will allow for phased and independent development of the residential community, while retaining the integrity of the larger 100 plus acre site.

TOP RIGHT: *central open space site plan*
BOTTOM RIGHT: *central water feature sketch*



MIXED USE DEVELOPMENT, UNITED ARAB EMIRATES

Master Planning & Site Design | Confidential Client
Location Confidential

The Master Plan for this 110-Hectare Eco Park includes a residential component, a 5-star Eco-Hotel, a Mangrove Island and Organic Farm. The Mangrove Island, a 60 Hectare development, includes a wildlife visitors' center, 21 eco-cabins, and a restaurant. Sustainable design elements include on-site energy and portable water production, all from renewable resources. In addition, extensive programs will be developed to protect the existing Mangroves as well as establish new Mangrove habitats. The 13-acre Organic Farm will supply the residential community and on-site restaurants with locally grown fresh produce. The plan provides the Eco Park with an opportunity to showcase progressive principles in the development of an ecologically significant site. More so, the Master Plan purposefully strengthens the existing natural, cultural and social values, serving as a model for the community and region at large.

TOP RIGHT: *site aerial*

BOTTOM RIGHT: *mangrove island visitors center habitat*





SHANTOU UNIVERSITY

Site Design | Central Park, University Bell Tower and Gateway
Shantou, Guangdong, China

Located in a landscape with strong physiographic components, the Campus has a distinctive identity that is characterized by steep forested slopes and dramatic granite outcrops, that surround the project site located on the valley floor. The Campus landscape, encompassing a gateway entrance and a continuous 'Central Park' open space, will serve as an important extension to the academic experience, providing a living laboratory for students, faculty and staff as well as providing setting for the buildings, and defining a hierarchy of spaces for learning, socializing and recreation.

TOP LEFT: *site plan*
BOTTOM LEFT: *bell tower perspective*





RECLAIMING / REINVENTING THE LANDSCAPE

LOWER VENICE ISLAND

Master Planning | Manayunk Development Corporation
Philadelphia, Pennsylvania

Lower Venice Island is a five-acre island located between the Schuylkill River and the Manayunk Canal in Philadelphia. The Philadelphia Water Department (PWD) had designated the site for a three million gallon combined sewer overflow tank, while the community saw the space as valuable recreational resource. The master plan provides a high-performance landscape that is focused on the sustainable management and display of water within the urban environment. Central to the site design is a 300-seat performing art center elevated seven feet above the floodway that covers much of the Island. A central spine located safely beyond the floodway manages lighting, stormwater flow and pedestrian traffic along the Island. Complementing the structured, active landscape is a program of passive landscapes that include a children's water garden and a riverbank restoration.

TOP RIGHT: *water garden and spray park*

BOTTOM RIGHT: *site plan*



PHARMACEUTICAL HEADQUARTERS

Master Plan | Confidential Client
New Jersey, USA

Chosen through a design competition to convert the existing campus landscape from of a mixed use manufacturing facility into a world class, campus-like research and development center, Andropogon’s master plan concept re-imagines The Campus to reflect the company’s role as a leader and innovator in the pharmaceutical industry. The design vision provides a distinctive character for the campus that reinforces the corporate identity, creates a more centralized and pedestrian friendly campus, while providing live-work resources for its employees. Implementation of the master plan will be grounded in a sustainable approach to site and landscape design; one that encourages designs that integrate water, soil, and vegetation; and creates “green infrastructure” that will also serve as iconic site amenities.

TOP RIGHT: *gateway perspective*
BOTTOM RIGHT: *conceptual “village street”*





US GENERAL SERVICES ADMINISTRATION OFFICE BUILDING

Master Plan & Site Design | US General Services Administration
Washington D.C.

Located on the West Campus of the former St. Elizabeth's Hospital in Washington, D.C. St. Elizabeth's campus, this new federal agency headquarters is located on a 176-acre site with 61 buildings, abundant open space, a Civil War cemetery, and stunning views of the surrounding area. The landscape structure, designed to reflect the surrounding eco-regions, incorporates multiple courtyards that help to integrate the 1.2 million square feet facility within the surrounding historic landscape, helps manage stormwater, and creates distinctive amenities for the building's users. The sustainable directives for the project include development to achieve a "Gold" Leadership in Energy and Environmental Design (LEED™) rating.

TOP LEFT: *building overview perspective*

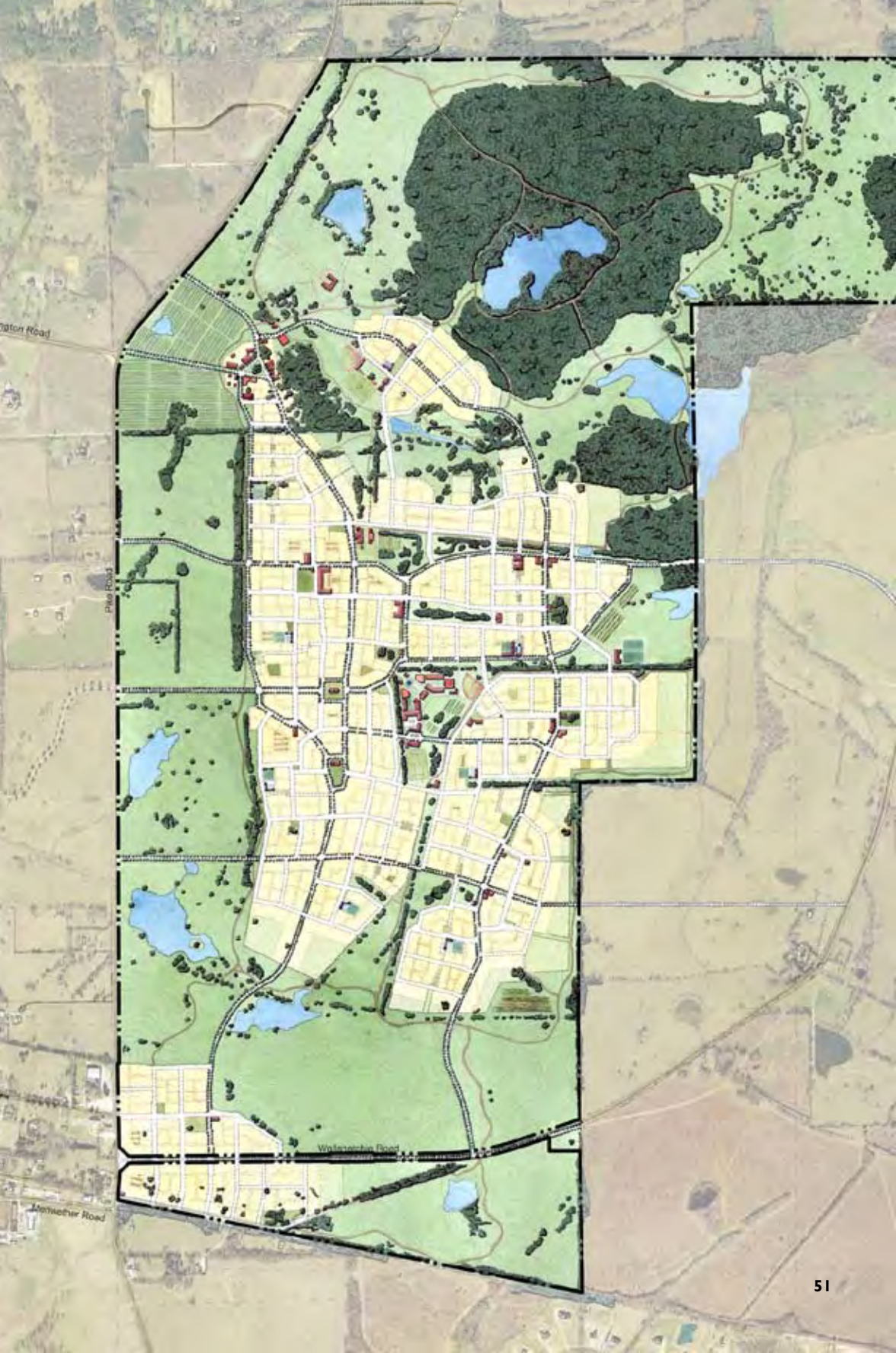
BOTTOM LEFT: *upper piedmont courtyard rain garden*

HUDSON FARM

Site Design | Hudson Land Development Co.
Montgomery, Alabama

Andropogon worked with the Hudson family to transform 2,100 acres of land in East Montgomery Alabama into a development that preserves the natural and cultural landscape of the Black Land Prairie. The proposed community establishes a new model of development that merges ecological design with the principles of new urbanist town planning. By locating the town on high ground and within the existing “landscape rooms” of the old farm fields, the development allows for the restoration of the natural drainage system, local stormwater management, and soil reclamation. Andropogon’s respectful integration of town and landscape creates opportunities for open space amenities like wetlands and neighborhood based agriculture that return natural and human communities to health and vitality.

RIGHT: *master plan*





NIKKO KIRIFURI RESORT

Master Plan | Ministry of Posts & Telecommunications
Nikko City, Tochigi Prefecture, Japan

The facilities and amenities designed for this complex, located on a mountainous site in Japan, were planned to protect the ecological integrity of the site. Although spectacular in its beauty, the project's natural 35-acre site posed serious challenges, such as complex landforms, steep slopes along a mountain stream, highly erodible soils, sensitive woodlands, and greatly restricted building zones. The new site features – access roads, bridges, parking, gardens, paths, trails, and stormwater management system – all fit seamlessly into the forested hillsides with minimal intrusion. Every aspect of the design was crafted to protect, repair, and dramatize the natural resources of the site in a style that reflected a Japanese sensibility to place.

2001 Design Merit Award from the American Society of Landscape Architects for the Landscape Master Plan for Nikko Kirifuri Resort, Japan.

TOP: *overview of site*

BOTTOM LEFT: *constructed waterfall*

BOTTOM RIGHT: *path leading to Japanese water garden*

SALVATION ARMY

Site Design | Ray and Joan Kroc Corps Community Center
Philadelphia, Pennsylvania

Andropogon's plan for the Ray and Joan Kroc Community Center is among the region's most environmentally progressive sites. To sustainably transform the contaminated brownfield site into a 13 acre community center including playfields, parking, formal gardens, and an urban agriculture center, Andropogon developed a comprehensive landscape approach. Through methodical water management techniques, re-use, and intensive waste recycling this richly programmed landscape responds to the City of Philadelphia's most stringent sustainability codes.

TOP RIGHT: *site plan*
BOTTOM RIGHT: *entry perspective*



ANDROPOGON ASSOCIATES LTD.

10 shurs lane philadelphia pa 19127
tel 215 487 0700 | fax 215 483 7520
<http://www.andropogon.com>